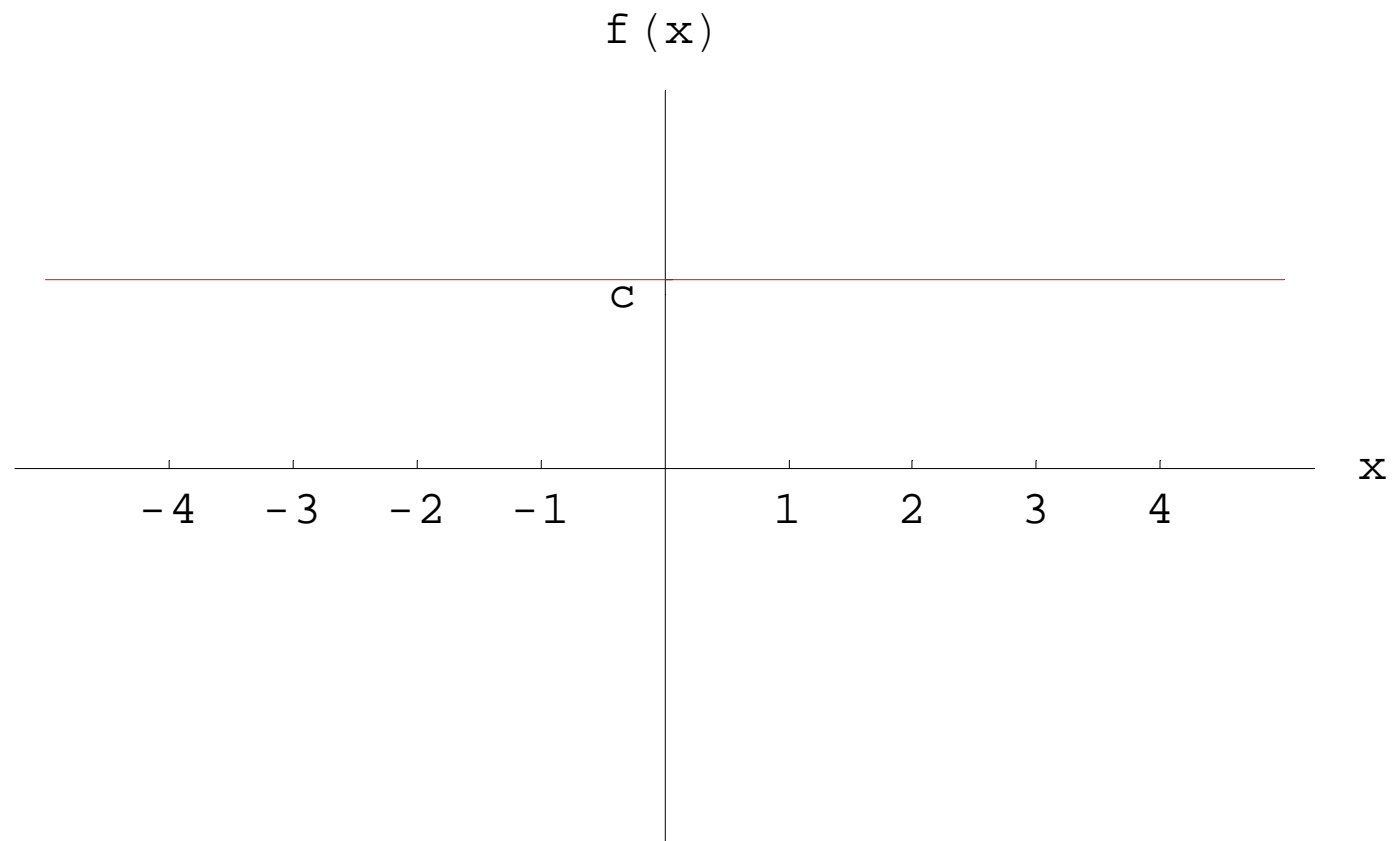


Pregled osnovnih elementarnih funkcija

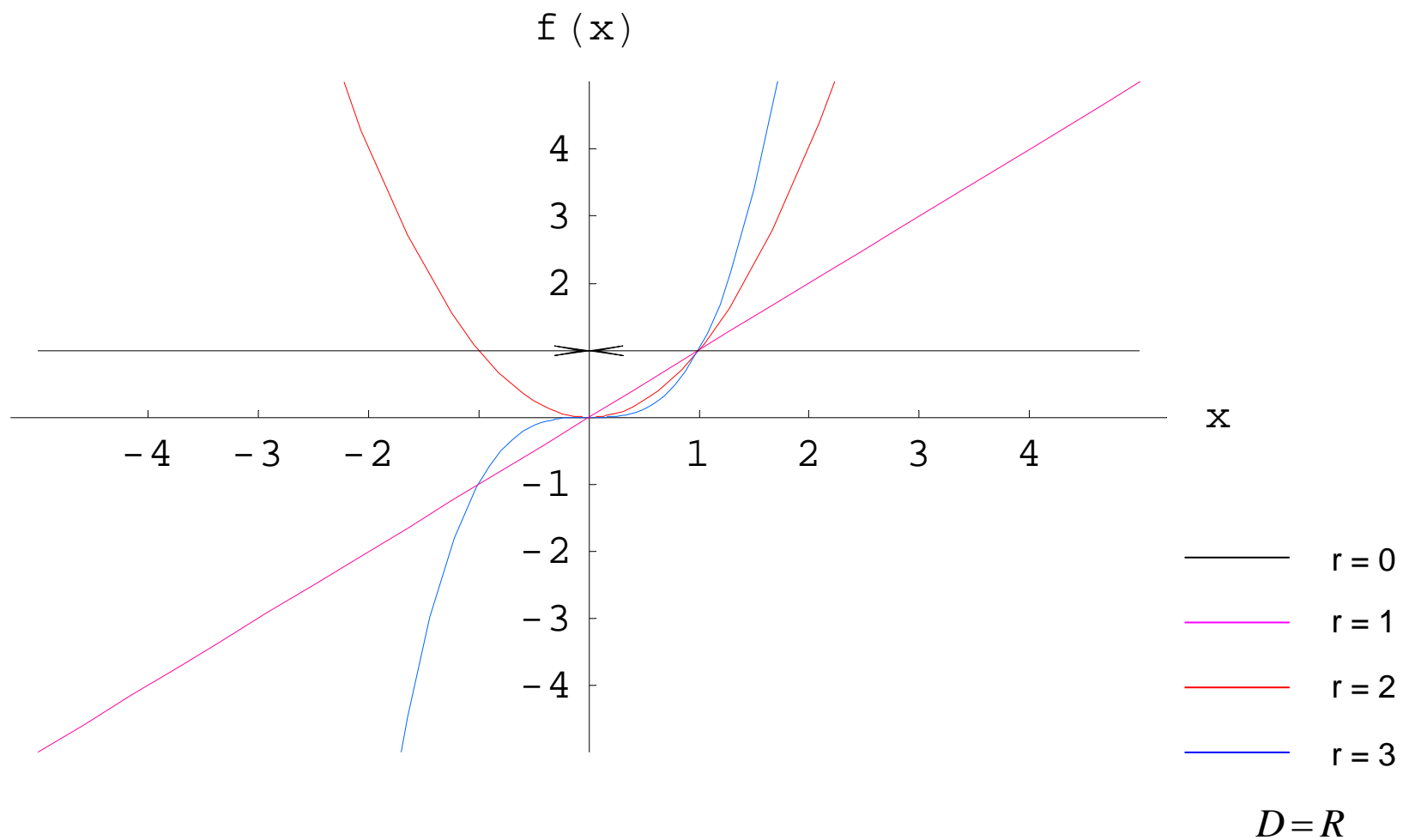
Konstantna funkcija

$$f : \mathbb{R} \rightarrow \{c\}, \quad f(x) = c$$



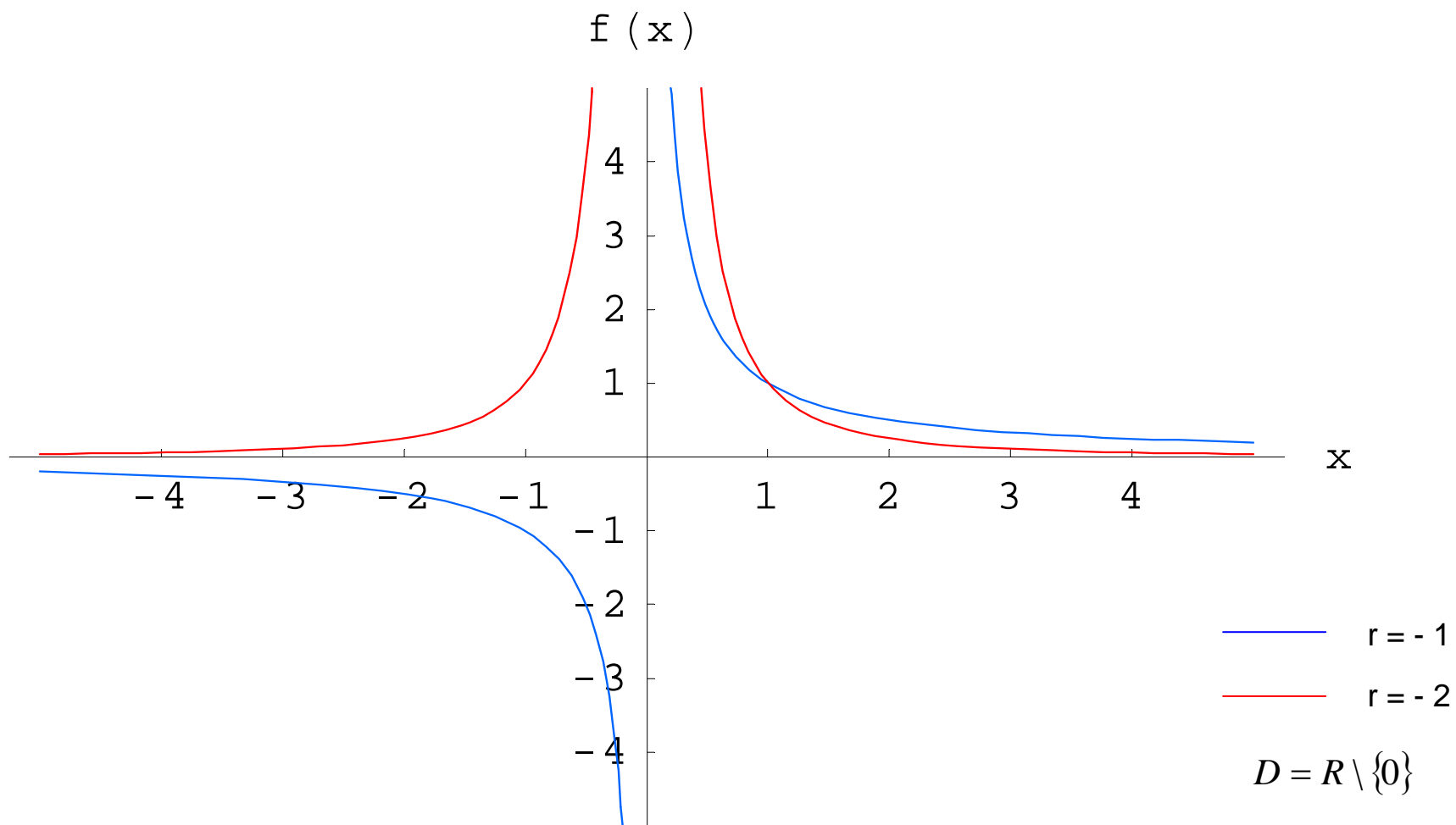
Potencija

$$f : D \rightarrow R, \quad D \subseteq R, \quad f(x) = x^r \quad (r \in R)$$



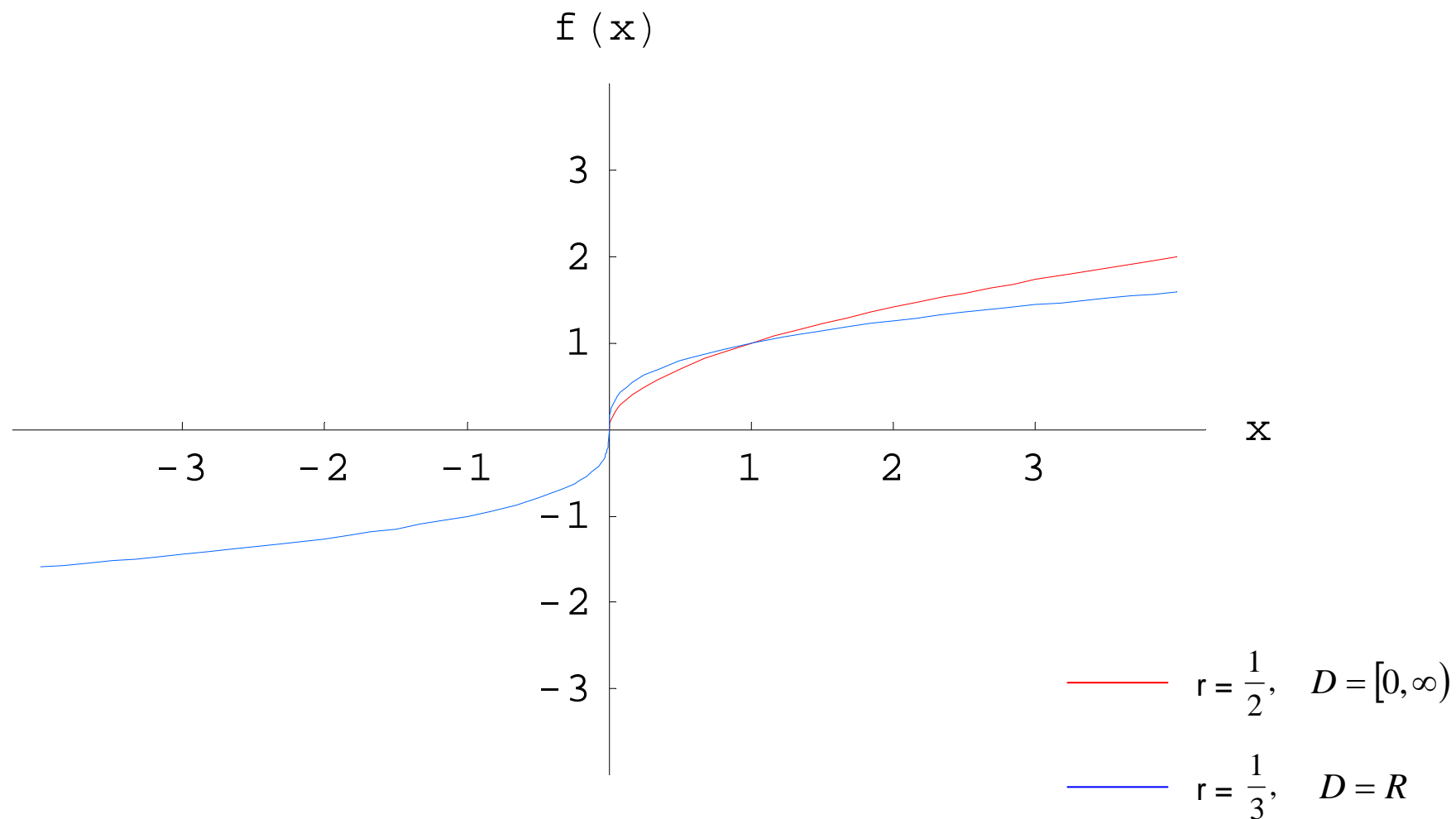
Potencija

$$f : D \rightarrow R, \quad D \subseteq R, \quad f(x) = x^r \quad (r \in R)$$



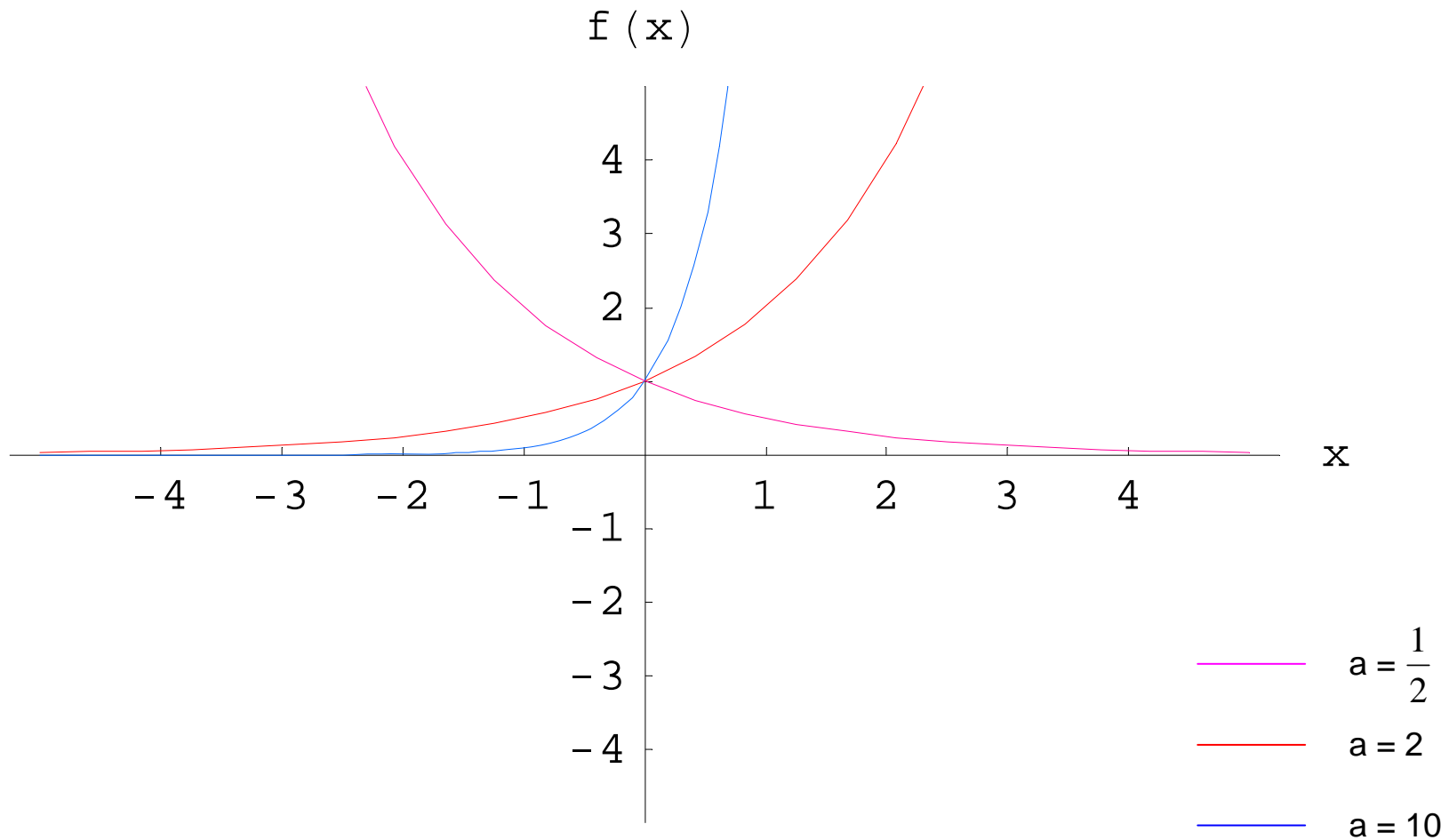
Potencija

$$f : D \rightarrow R, \quad D \subseteq R, \quad f(x) = x^r \quad (r \in R)$$



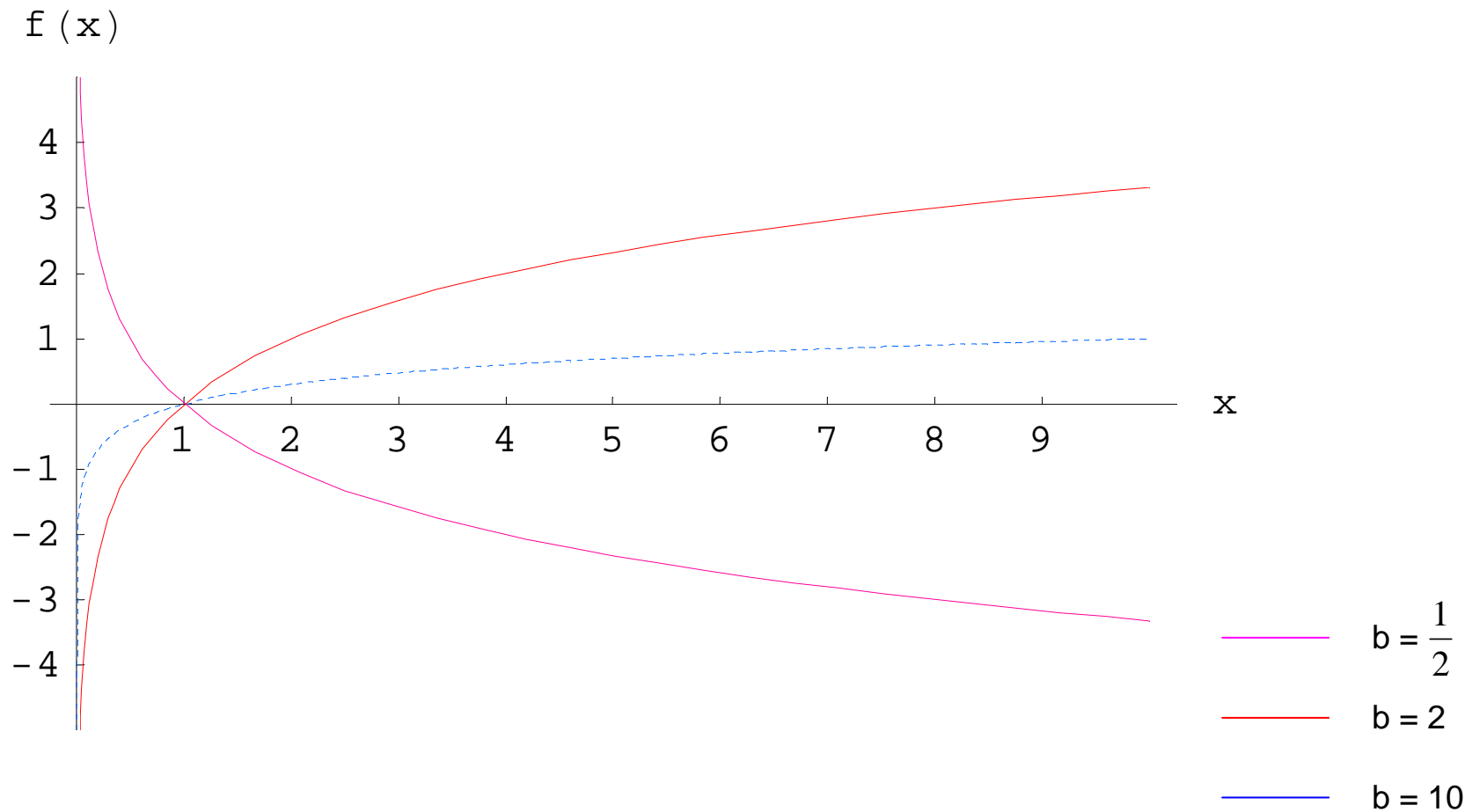
Eksponencijalna funkcija

$$f : \mathbb{R} \rightarrow (0, \infty), \quad f(x) = a^x \quad (a \in (0, \infty) \setminus \{1\})$$

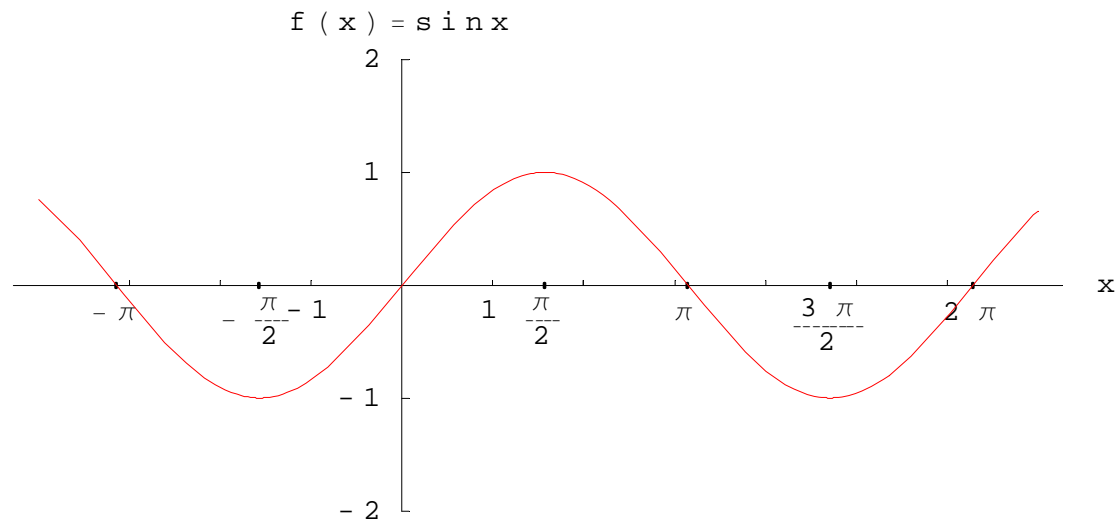


Logaritamska funkcija

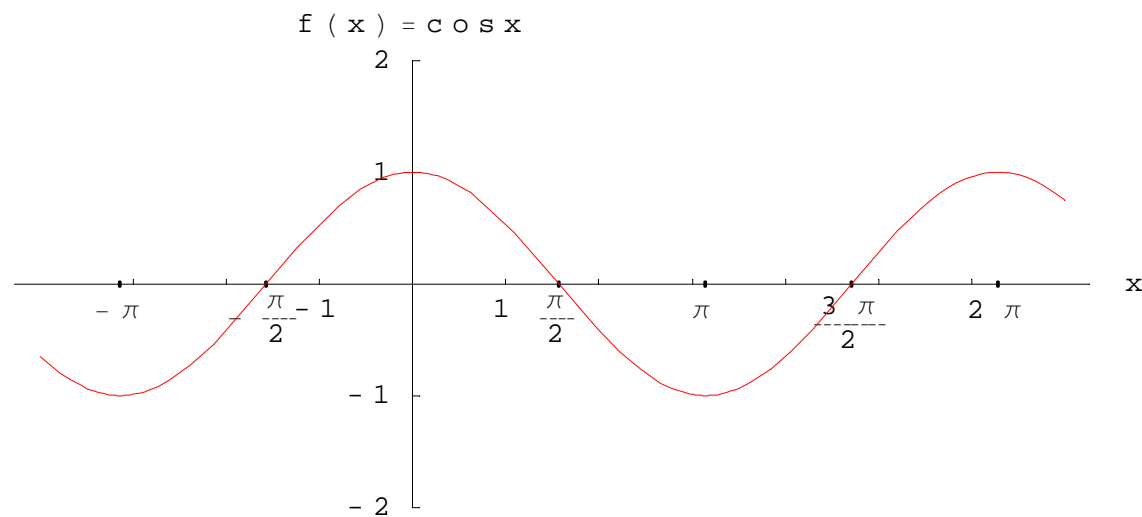
$$f : (0, \infty) \rightarrow \mathbb{R}, \quad f(x) = \log_b x \quad (b \in (0, \infty) \setminus \{1\})$$



Trigonometrijske funkcije

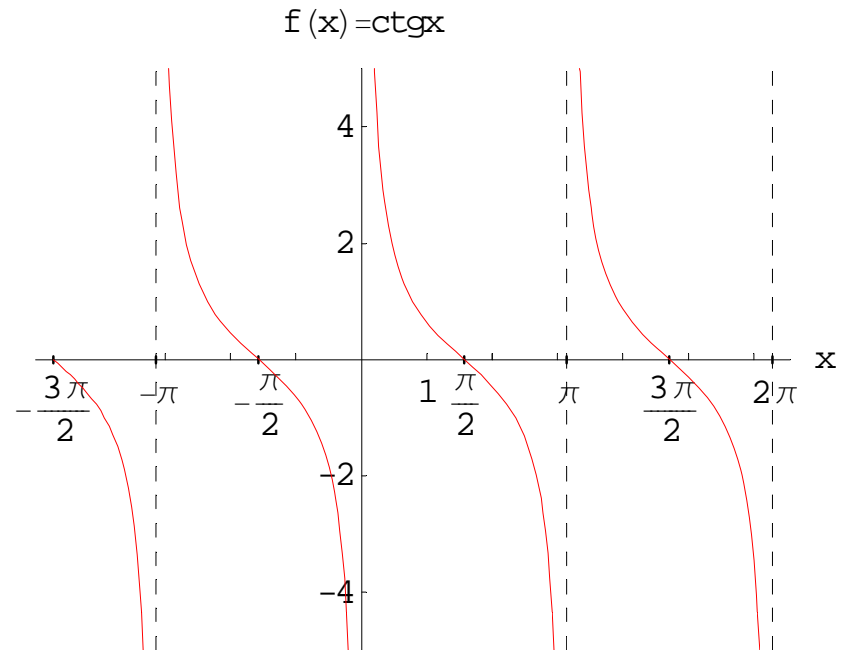
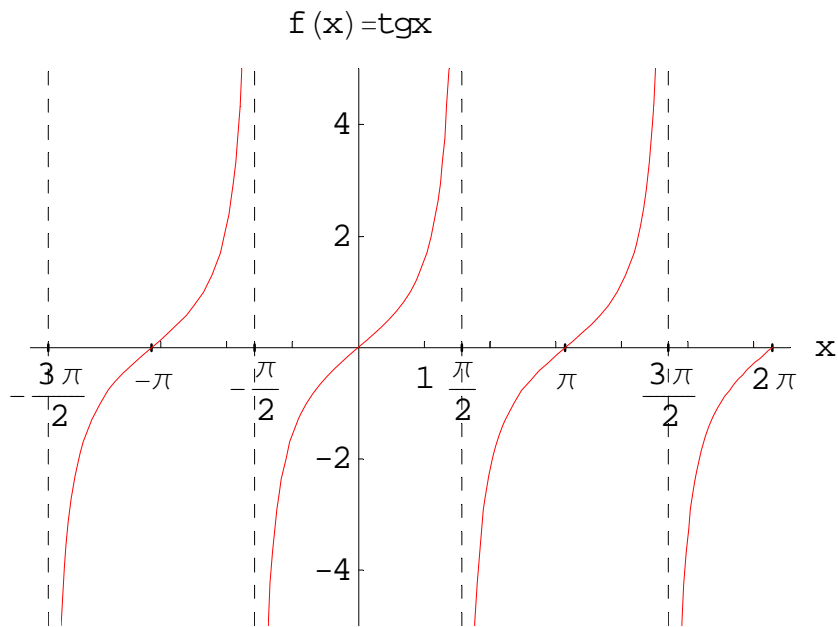


$$\sin : \mathbb{R} \rightarrow [-1, 1]$$



$$\cos : \mathbb{R} \rightarrow [-1, 1]$$

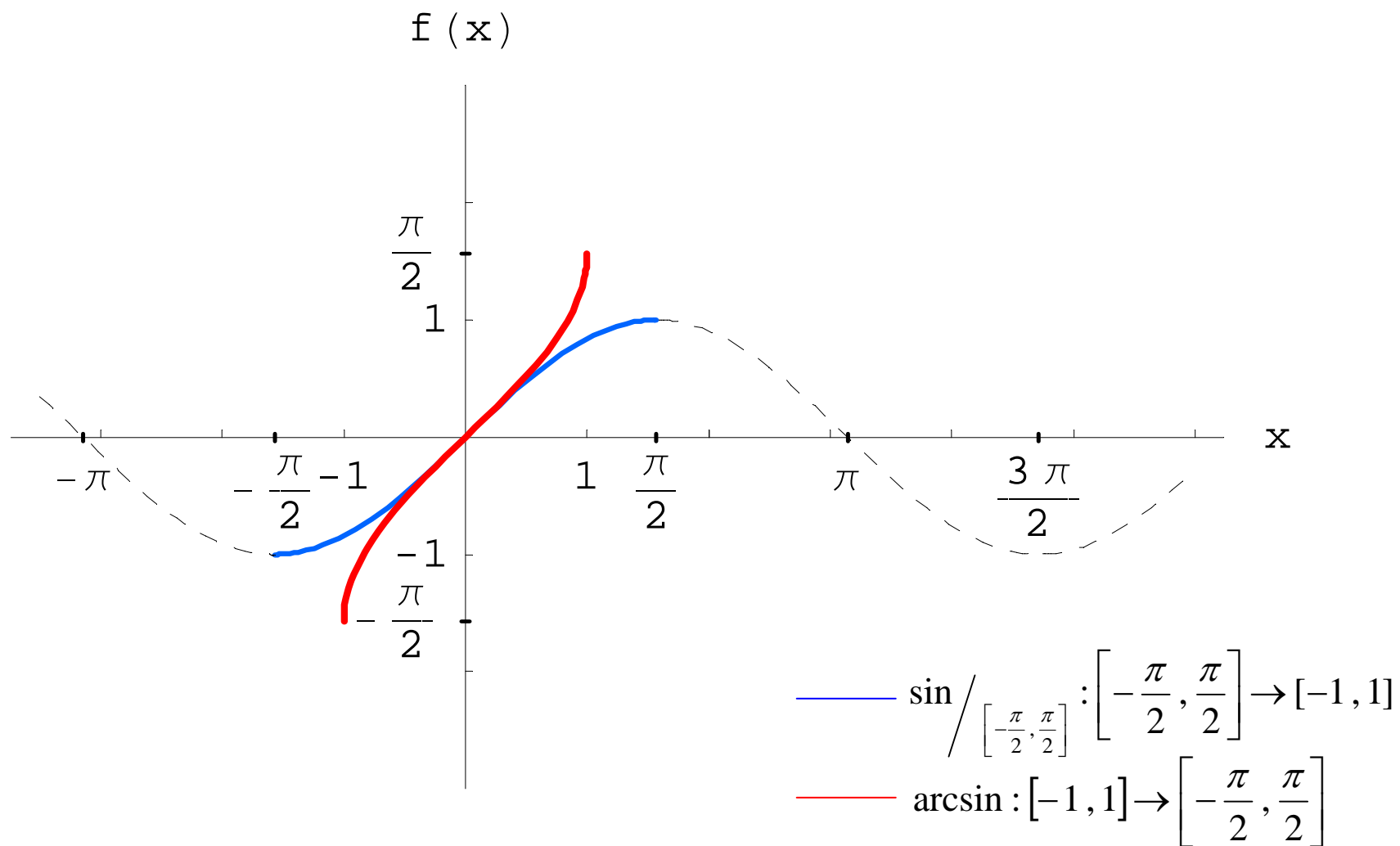
Trigonometrijske funkcije



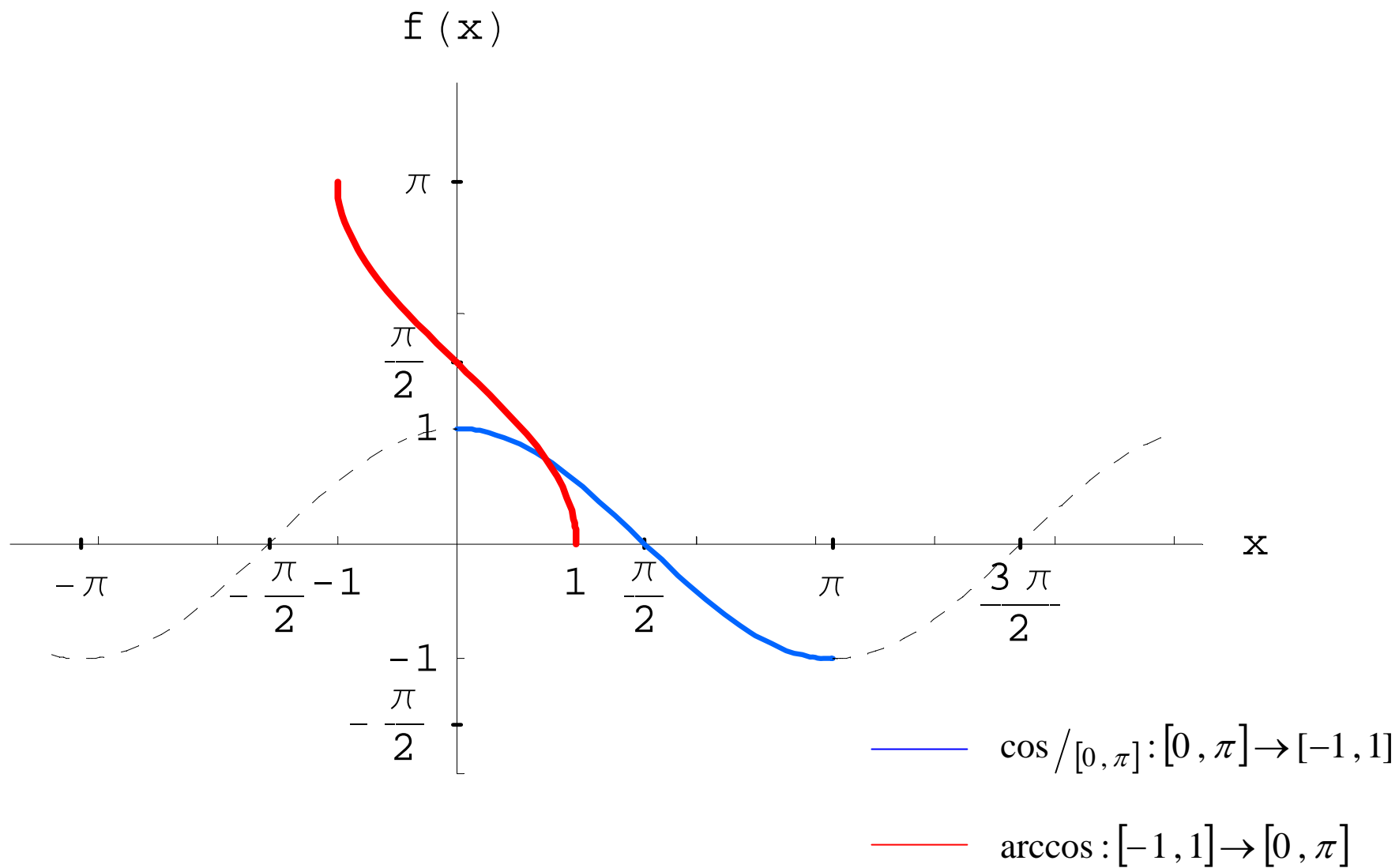
$$\operatorname{tg} : \mathbb{R} \setminus \left\{ \frac{\pi}{2} + k\pi : k \in \mathbb{Z} \right\} \rightarrow \mathbb{R}$$

$$\operatorname{ctg} : \mathbb{R} \setminus \{k\pi : k \in \mathbb{Z}\} \rightarrow \mathbb{R}$$

Arkus sinus

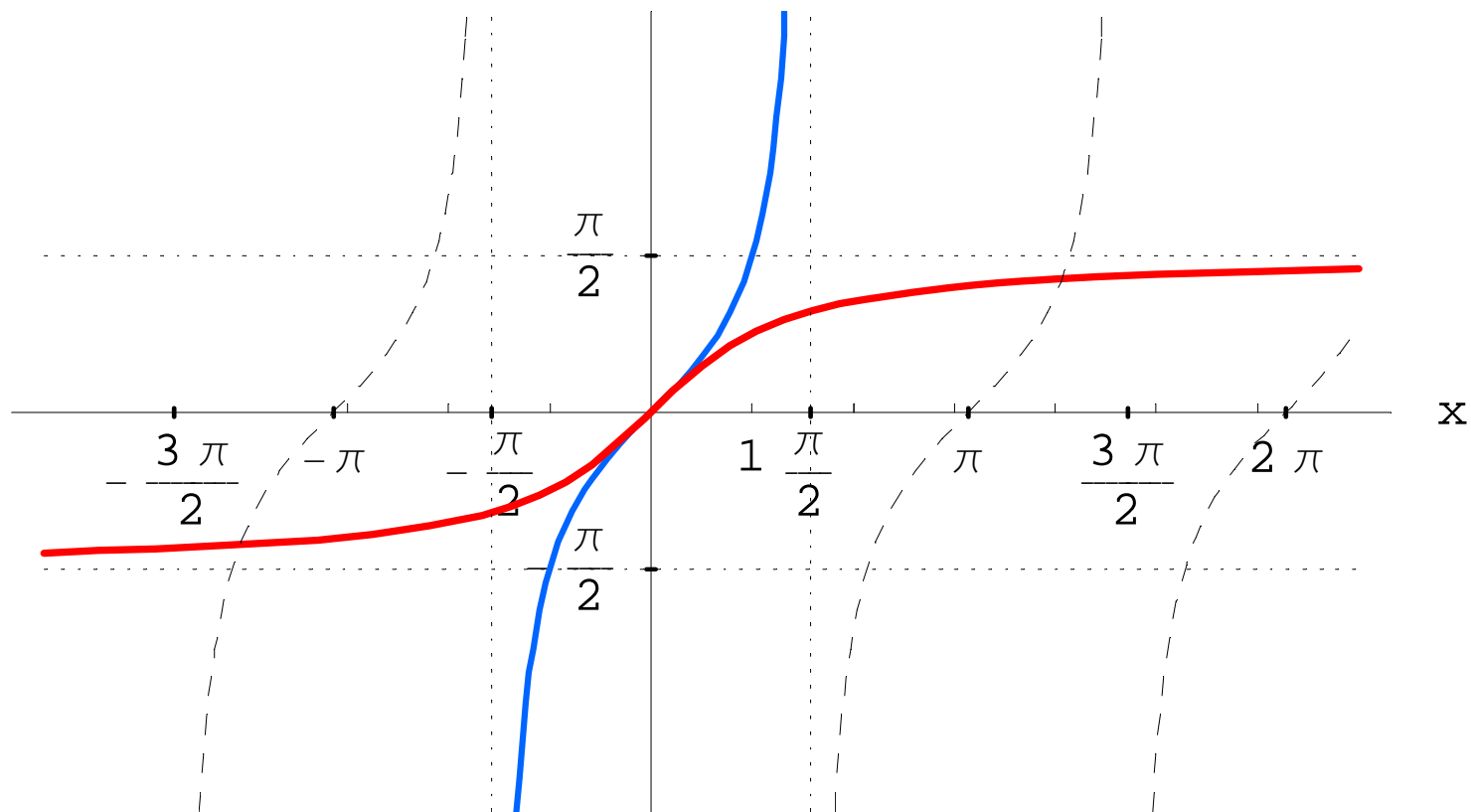


Arkus kosinus



Arkus tangens

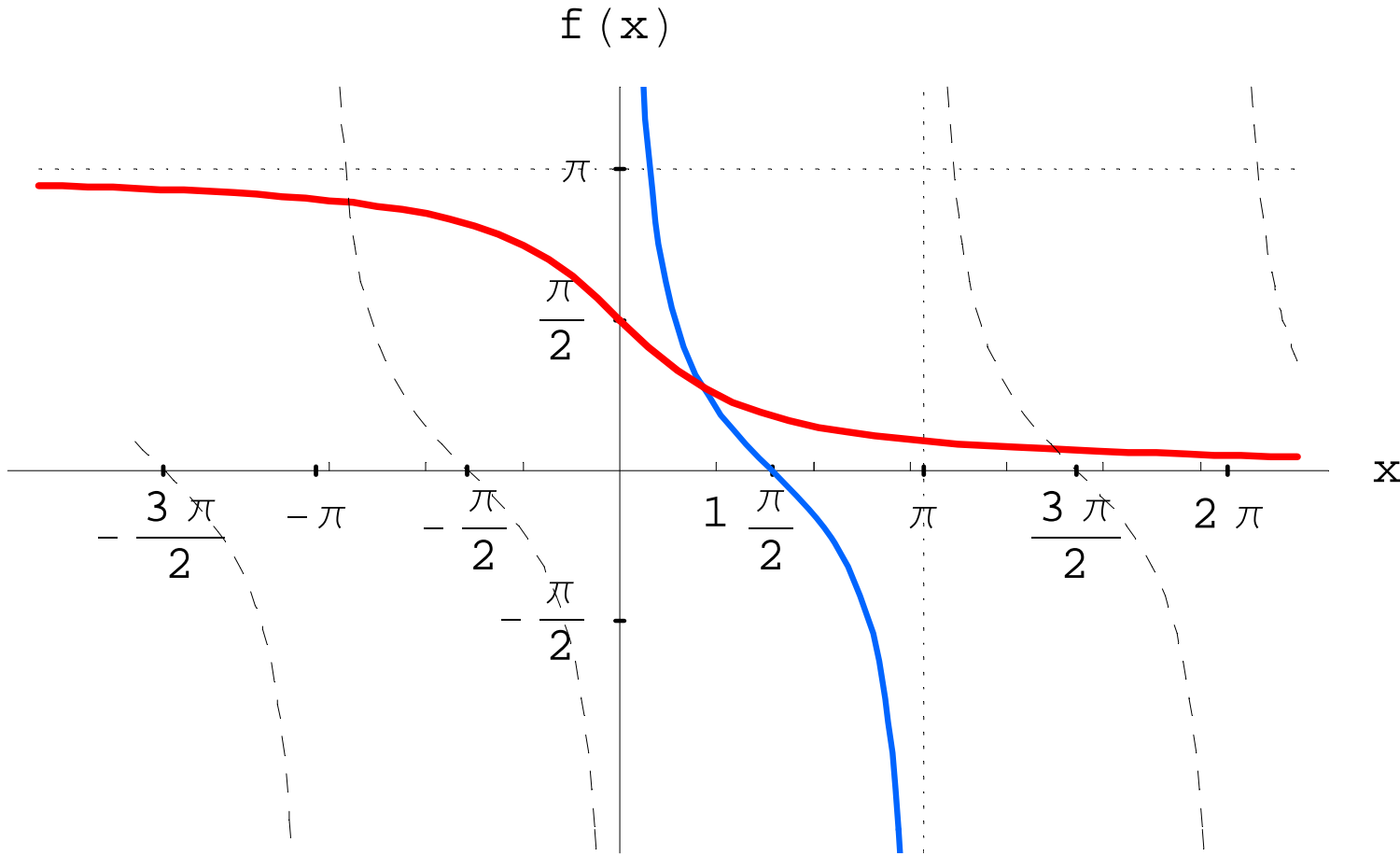
$f(x)$



— $tg / \left[-\frac{\pi}{2}, \frac{\pi}{2} \right] : \left[-\frac{\pi}{2}, \frac{\pi}{2} \right] \rightarrow R$

— $arctg : R \rightarrow \left[-\frac{\pi}{2}, \frac{\pi}{2} \right]$

Arkus kotangens



— $ctg / [0, \pi] : [0, \pi] \rightarrow R$

— $arcctg : R \rightarrow [0, \pi]$